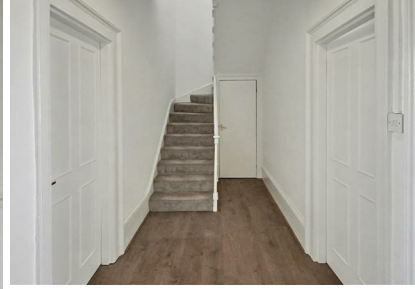


A spacious duplex three double bedroom apartment within the heart of Leamington Spa which has been recently redecorated throughout. Situated on the main Parade and accessed off Tavistock Street this apartment offers spacious and contemporary accommodation whilst retaining period features of high ceilings and ample accommodation.
ONLY SUITABLE FOR MAXIMUM OF TWO SHARERS - PLEASE NOTE ACCESS IS

THROUGH A COMMERCIAL CAR PARK FOLLOWED BY SEVERAL FLIGHTS OF STAIRS AND THERE IS NO LIFT ACCESS.

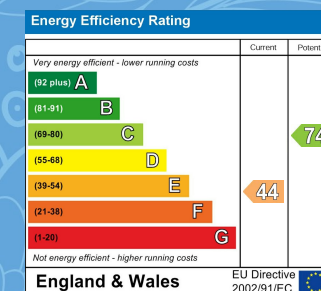


Your Property - Our Business

- Residential Estate Agents •
- Lettings and Property Managers •
- Land and New Homes Agents •

Leamington Spa Office
Somerset House
Clarendon Place
Royal Leamington Spa
CV32 5QN

01926 881144 • ehbresidential.com



Also at: Warwick, 17-19 Jury St, Warwick CV34 4EL